

SPECIFICATION FOR APPROVAL

Company Name: Greenough Enterprises Co.,Ltd

Product Name: LED Panel Light

Part No.: GNH-PL-12W-R03

Description: 12W LED panel light

Your part No.: GNH-PL-12W-R03



1. Features :

- Energy saved up to 50%. high brightness, even lighting output.
- 5-years life time
- Wide range of input voltage: AC85-265V
- Instant start, no flickering, no humming
- New high efficiency constant current driver
- Special circuit design, each group of LEDs work separately, avoiding any problem of lighting output caused or influenced by single faulty LED
- No electrical wave, conforming to CE ,FCC
- Green environmental protection, lead-free material, conforming to ROHS
- No RF interference

2. Applications:

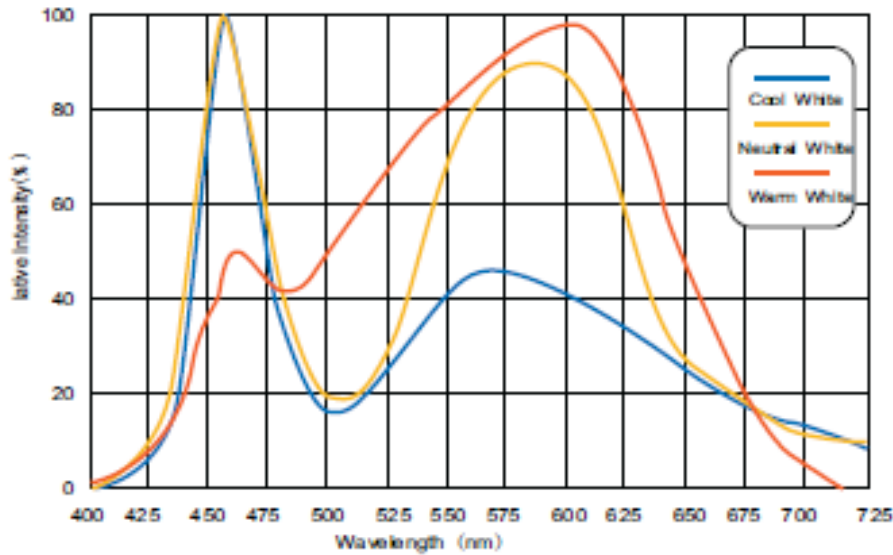
- Hotels
- Conference / Meeting rooms
- Factories & Offices
- Commercial Purposes
- Residential / Institution Buildings
- Schools, Colleges & Universities
- Hospitals
- Other Lighting

3. Structure:

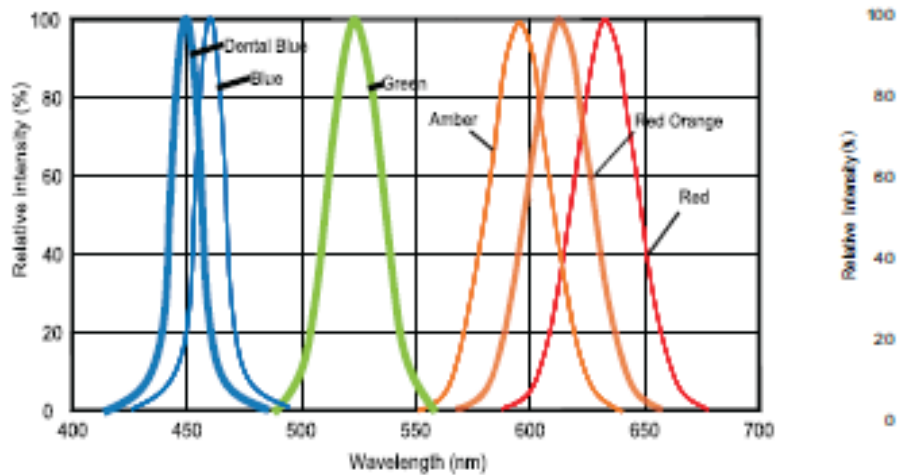
NO.	Item	TYPE	Explain	Remark
1	【housing】	【material】	【Aluminum】	
		【Thermal conductivity】	200W/mk	
		【surface treatment】	【White】	
2	Guideplate/ diffuser plate	【Material】	PMMA	
3	LEDs	【Lighting Angle】	120°	
		【Type】	2835	
		【LED Q'TY】	60pcs	
4	MCPCB	【Material】	【Aluminum】	
		【Thickness】	1 mm	
5.	Lumen output	Warm white:880lm		
		Neutral white:920lm		
		Cool white:960lm		

4、Spectrum

Spectrum

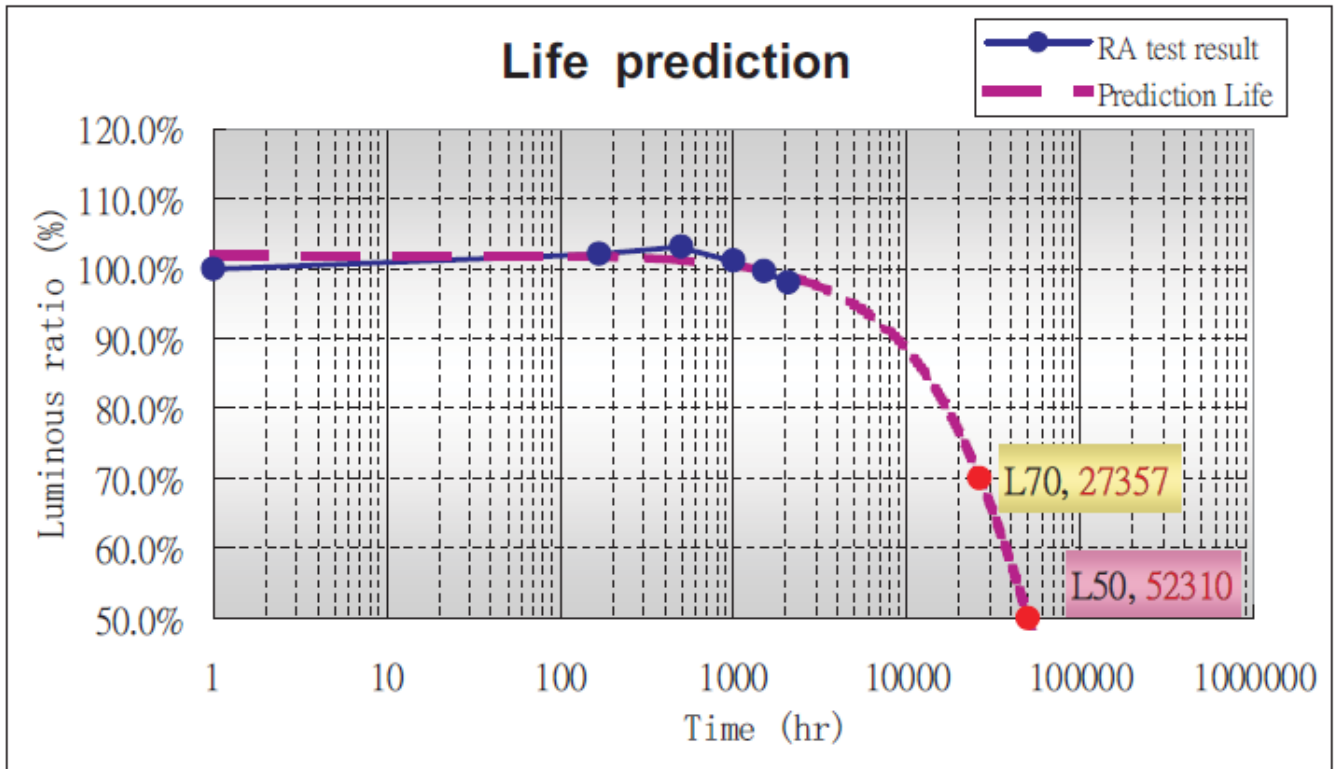


Cool White, neutral white and warm white color spectrum at $T=25^{\circ}\text{C}$.

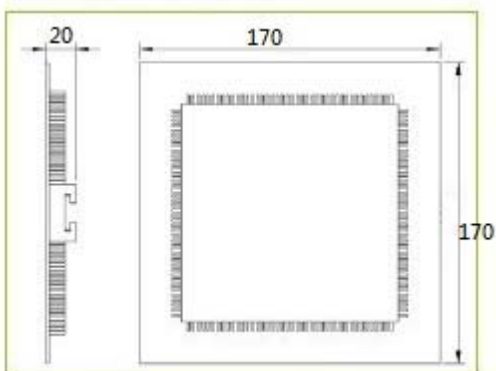


Red, Amber, True Green, Blue, Dental Blue color spectrum at $T=25^{\circ}\text{C}$

5. LED's Life prediction



6. 【Mechanical Dimensions】 :



【Notes】

- 1、【All dimension units are millimeters】
- 2、【All dimension tolerance is $\pm 1\text{mm}$ unless otherwise noted】

7. 【Package】

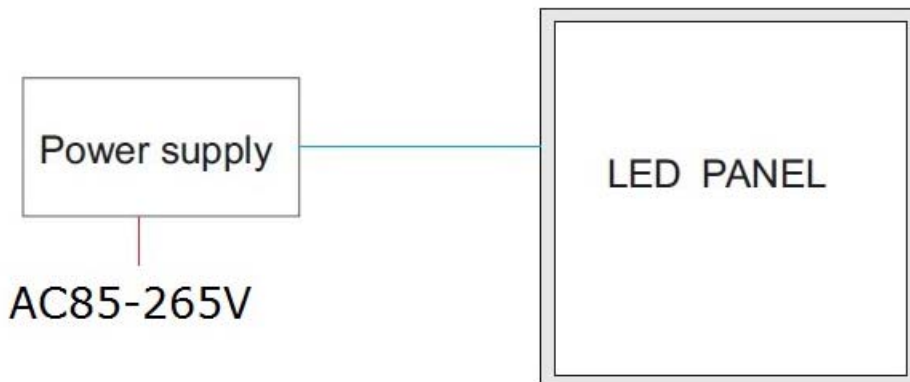
【Packing measurement】 :48*20*45mm(30PCS/CTN)

【Net weight of one Lamp】 : 11.70kg

【Gross weight】 : 12.60KG/Carton

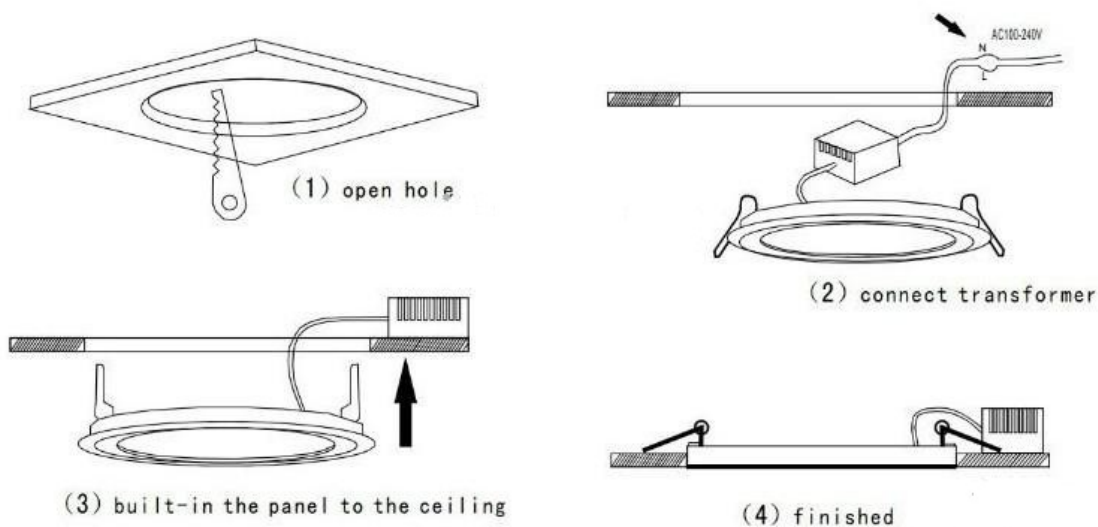


8.Circuit Connection Diagram:



9.Installation:

Installation ways: Surface mounted



Attention on Installation:

1. Panel lights should be installed by trained electronic technician.



2. Please check all the accessories when open the cartons.
3. The distance between the light and any flammable materials must be more than 0.2m. The distance between the upper part of the installed light and the ceiling must not be less than 2 cm. Don not install into ceilings or walls that contain heat source. The main cable must not connect with the low voltage cable or the surface-mounted lights.
4. Guide the lights' connecting cables through the drilled hole, and fix the surface-mounted lights with the pre-fitted clips. Make sure that these are securely connected to the base material.
5. When laying the cables, make sure that the cables and plugs are not subjected to any tensile or twisting forces. Do not kink cables. Output cables should be laid separately and at a distance from other cables.
6. After installation, connect the transformer to the mains supply
7. Proceed by connecting the wiring cables to the lights. Usually, the brown (or black) wire is the Live wire, connect it with the terminal marked "L". The blue wire is Naughty wire; connect it with the terminal marked "N".
8. Use the dedicated LED drivers only, do not connect to other loads
9. Do not remove the label of the lights and drivers.

Notes on Using:

1. Please always use the light out of its package.
2. Before starting use of the light, please check if the light was damaged during transportation. If any damage shown, please DO not install or use it.
3. Any maintenance should be performed by trained professionals only.
4. Keep packaging material away from the reach of children and pets.
5. Caution: Keep children away from the lights, there are some small components that may be swallowed by children, and never allow them to play with electrical devices.
6. Try to avoid looking directly at lights for a long time. Do not shine the LED light in another person's eyes.
7. Never cover the lights by other objects
8. Keep the panel light away from the flames or heat sources.
9. The lights should be inspected repaired or special treatment if beyond service time.
10. Non-professionals are not allowed to disassemble and maintain the products. We have the right not to provide after-sale service if unauthorized disassembly and maintenance happens to the products.

Maintenance:

1. Before to clearing the panel lights, please make sure it have been powered OFF.
2. Use a dry or slightly moistened cloth for cleaning.
3. Never use any chemicals or abrasives for cleaning.

10. Warranty policy

- 1. All products are, at the time of shipment, warranted to be free from defects in material and workmanship under normal service and use, provided that installation or renewal is in accordance with manufacturer's instructions.**
- 2. The warranty lasts 1 years, counting from the date of shipment from Greenough.**
- 3. If any products appears not to meet the warranty specified above, and then after Greenough have examined and tested the allegedly non-complying products and found said products to be in fact defective within the above warranty, Greenough will at its option either furnish a replacement for or issue a credit for the purchase price of products thereof which proves to be not in compliance with the aforesaid warranty.**
- 4. The fitting of a replacement supplied free of charge under warranty does not extend the original warranty period cover.**
- 5. Greenough does not automatically accept liability for associated or consequential loss of any kind whatsoever, but due consideration will be given in cases where products is confirmed as defective after examination and test.**
- 6. This warranty does not apply to any failures which prove to be the result of misuse, negligence, accident, maladjustment or repair.**

Warranty 1 year

What excluded from coverage is as following:

- (a) Damage that result from abuse and misuse such as improper operation, storage, accident or neglect;**
- (b) The defects during shipping;**
- (c) Defects or damages resulting from the use of Non-Greenough branded or certified products, accessories or other equipment;**
- (d) Other acts which are not the fault of Greenough, This warranty is the only one Greenough warranty, and no other exists.**